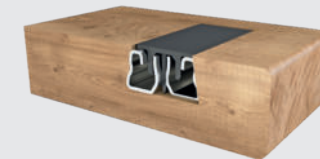
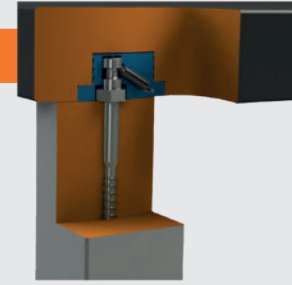


Holzdesign Kitzmüller GmbH

Fittings made by joiners for joiners.

UNIFIX

connector

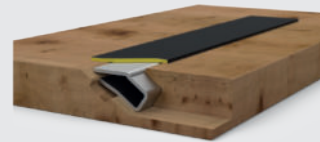


PLANOGRAT

burr strip

INDUFIX

connector



MINIGRAT

burr strip

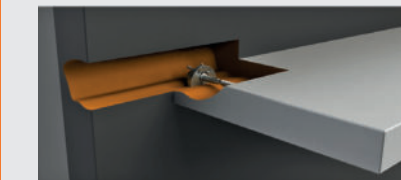
Available at
our retail partners

UNIFIX

universal connector



- extremely stable
- invisible use
- versatile use
- easy to mount
- flush mounting



tray support



table base mounting

Anchor screws for wood and metal



- ø 40 mm
- ø 50 mm
- ø 60 mm
- ø 70 mm
- ø 80 mm

Applications

- furniture making
- mobile components
- garden furniture
- staircase construction
- store construction
- exhibition stand construction

Bench and table fitting

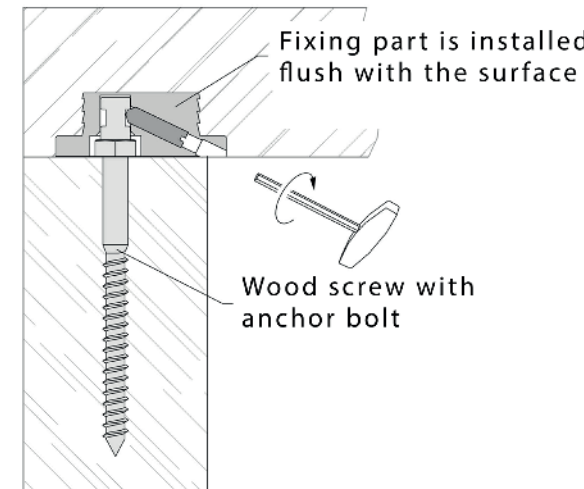


Bed hardware



www.universalverbinder.at

Functionality



from panel thickness 30 mm

INDUFIX

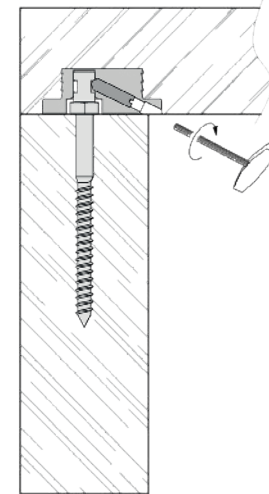
table leg connector



The secure table leg connector
for table legs and table sides

- extremely stable
- twist-proof
- simple
- flush with the surface
- self-explanatory
- inexpensive
- universal

Functionality



Flush mounted

from panel thickness 25 mm



ideal for table leg supports

Semi-deep installation

from panel thickness 18 mm



www.indufix.at

PLANOGRAT

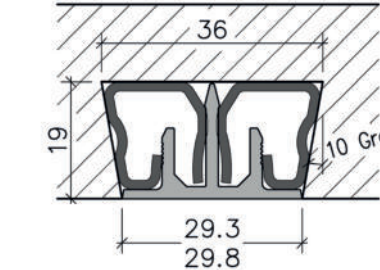
burr strip



from panel thickness 25 mm

PLANOGRAT <<
Ensure that your tabletop
remains permanently level

Functionality

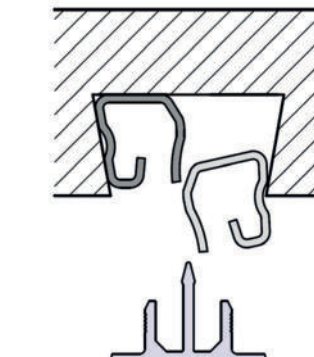


cross section

- flush installation with plane cover
- quickly installed by hammering in the clamping strip
- extremely resistant to bending due to 2 stable rolled steel profiles
- also suitable for pull-out tables

Scope of delivery

- 2 rolled steel profiles for stable shaping
- 1 aluminium profile as flush cover



installation

www.gratleiste.at

MINIGRAT

burr strip



from panel thickness 19 mm

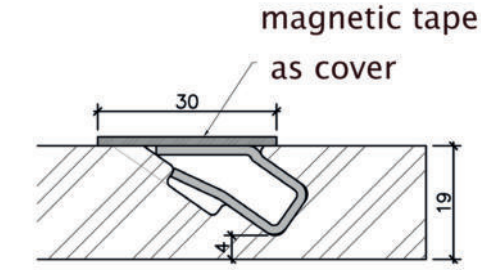
MINIGRAT <<
The invisible force behind
stable solid wood fronts

- ideal for solid wood fronts with a thickness of 19 mm or more
- quickly installed by hammering in the steel profile
- no milling through at the front edges
- very bend resistant steel profile

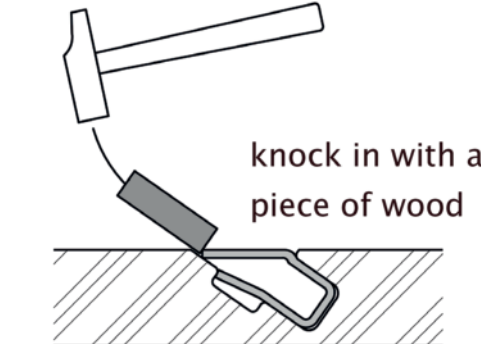
Optical coverage

- with a black matte magnetic strip
- almost flush with the surface

Functionality



cross section



installation

www.gratleiste.at



Rammerstorfer OG



TIVER

table extension



RAMTI

table connector



TARAM

tray support

Available at
our retail partners

TIVER

table extension

TIVER <<

The ideal solution for
enlarging the tabletop



Table extensions attached
absolutely horizontally

www.tischverlängerung.at

Fitting for table extension

- easy installation
- thin, compact profile
- anodized aluminium surface
- aesthetic design



Plug-in and screw-on fitting

- very stable design
- star knob screw for fixation
- simple retroactive extension

RAMTI

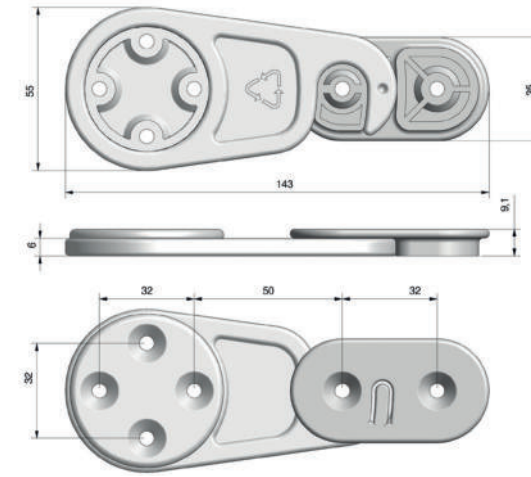
table connector

RAMTI <<

The quick and easy solution
for table combinations



Detail dimensions



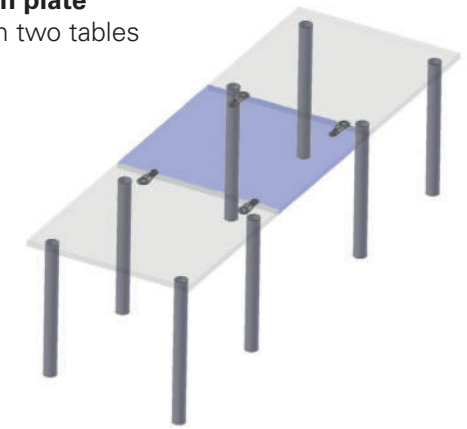
www.tischverlängerung.at

Table top connector

- safe and high load-bearing connection
- tool-less, one person assembly
- ideal use for insertion plates

Insertion plate

between two tables



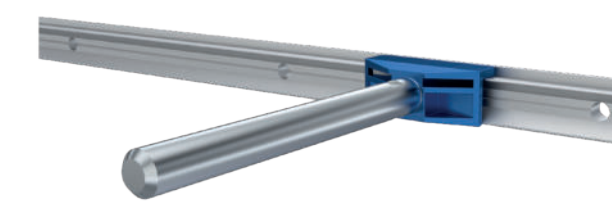
Functionality

TARAM

tray support

TARAM <<

The carrier for lightweight walls
or challenging masonry



Detail dimensions



- compact dimensions
- inclination adjustable by turning

www.tablarträger.at

Tray support on suspension rail

- multiple screw connection for perfect support
- easy and time-saving installation
- continuous adjustment of the fitting
- possible to put several brackets on one rail

Suspension rails made of aluminium

- easily shortened to required length
- standard length: 80 cm
- standard length: 192.5 cm
- pre-drilled rail for simple wall mounting



Rail length: 80 cm / 192.5 cm

DÜBELKLEMME

gluing aid

NEW

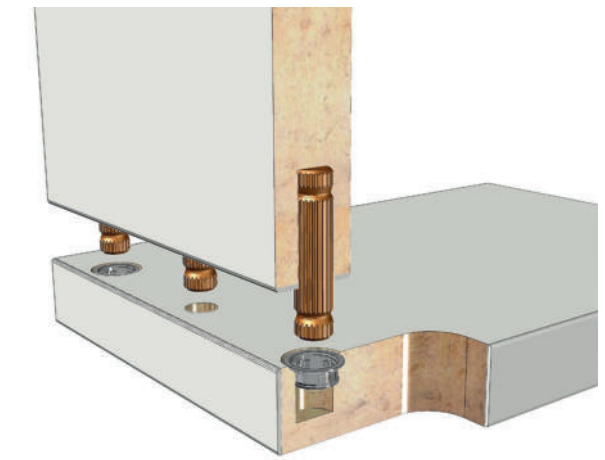


DÜBELKLEMME <<

Tool-free for the DIY industry
and with only 1 second pressing time for
efficient mass production

www.dübelklemme.at

Functionality



from corpus thickness 16 mm

Corpus glueing:

- without cabinet clamp
- without screw clamp

- almost tool-free assembly
- saves time and energy
- ideal for self-assembly furniture industry

Cabinets are glued together without a cabinet
press or clamps. Assembly is carried out as
usual with wooden dowels, with an additional
DÜBELKLEMME being used for every 2nd or
3rd dowel to bridge the curing time of the glue.

No clamps
necessary!

